

CERES

TAG

CERES GEN6

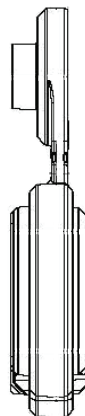
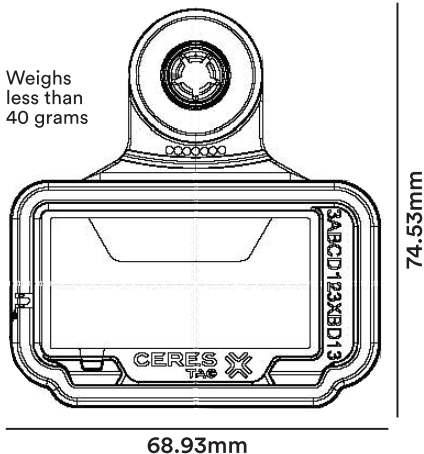


HOW IT WORKS

- Direct-to-satellite connection
- No towers, base stations, or on-farm infrastructure required
- Real-time data delivery
- Designed for remote, scalable, and low-maintenance monitoring
- Simple deployment: activate the device, apply/attach, and start receiving insights

DATA COLLECTION

- Reproduction - estrus detection in beef cattle, mounting patterns, calving alerts
- Advanced PFI algorithm updated by CSIRO, for even smarter, more accurate behavioural insights.
- Health & welfare – signs of illness, stress, or unusual behavior
- Location tracking – individual animal movement
- Grazing patterns – pasture use, land rotation insights, and efficiency
- Biosecurity alerts – early warning of potential disease or abnormal activity
- Performance insights – animal behavior and efficiency



- The only livestock tracker with IP68 accreditation. 100% waterproof!
- Built with bullet-proof polymer for years of hard knocks and use.
- UV resistant flexible tether with single pin design, secure & durable.
- Green 'bumper' added and over-moulded onto white for enhanced device protection.
- Higher spec material for enhanced UV protection & longer device life.
- One-piece front enclosure, extra protection for internal hardware.
- 'Ultrasonic' welded casing, superior sealing integrity and durability.
- Longer-lasting battery, keeping your device running when you always need it.
- Reusable, get more value, again and again and again.

TURNING INSIGHTS INTO GENERATIONS OF PERFORMANCE.



Knowing your livestock's movement, welfare and performance is power. And utilising that insight for better management, reduced losses, and higher productivity is profit.

LEARN MORE AT WWW.CERESTAG.COM

CFD.800.12.25.008.1

CERES TAG, the CERES TAG logo, and CERES TAG product names mentioned are trademarks of CERES TAG LTD, registered in Australia and other countries.